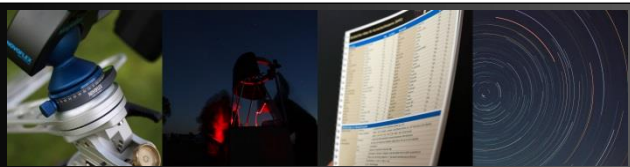
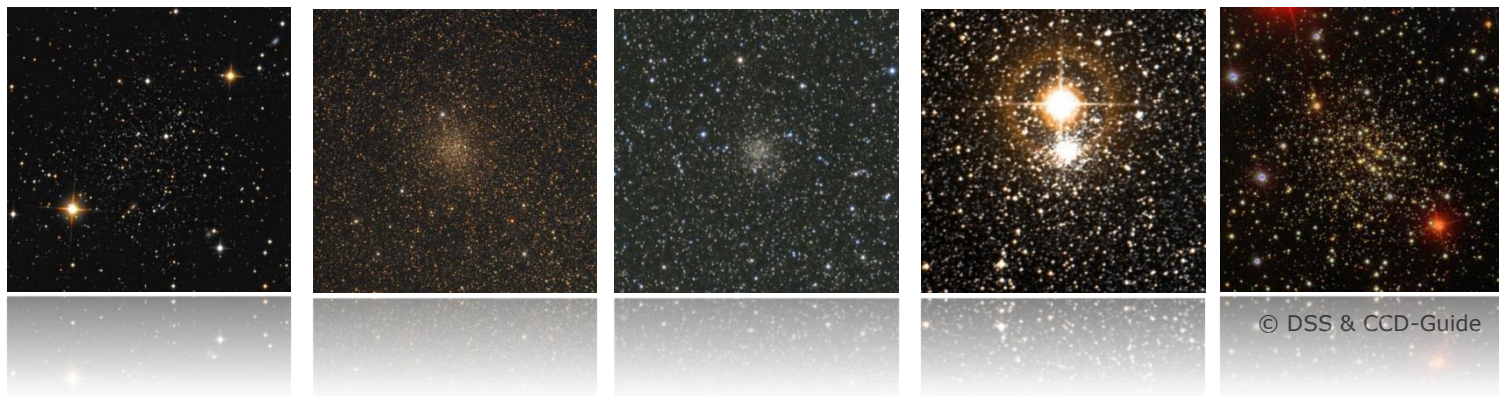


Palomar - Katalog



Kugelsternhaufen: 15

Stand: Oktober 2017



Rene Merting
Christopher Hay

Palomar - Kugelsternhaufen

Aufsuchkarten für alle Palomar-Kugelsternhaufen

Name	SBK	RA	DEC	Seite isDSA	Größe	Gesamt Hell	hellst. Stern	Größe in Lj.	Ent- fernung	Bemerkung
Pal 1	Cep	03h33m20s	+79°34'52"	S.6	2,8' x 2,8'	13m6	19m0	11 Lj.	40.000 Lj.	kleinster und jüngster Palomar-KS
Pal 2	Aur	04h46m06s	+31°22'53"	S.37	1,7' x 1,7'	13m0	18m0	49 Lj.	100.000 Lj.	
Pal 3	Sex	10h05m31s	+00°04'15"	S.58	2,8' x 2,8'	14m3	18m0	238 Lj.	295.000 Lj.	größter KS unserer Milchstraße
Pal 4	UMa	11h29m17s	+28°58'25"	S.34	2,1' x 2,1'	14m2	17m7	198 Lj.	333.000 Lj.	weiter entfernt als die Magellanschen Wolken
Pal 5	Ser	15h16m05s	-00°06'41"	S.56	6,9' x 6,9'	11m8	17m1	148 Lj.	76.000 Lj.	
Pal 6	Oph	17h43m42s	-26°13'21"	S.79	7,2' x 7,2'	11m6	20m0	46 Lj.	7.200 Lj.	steht sehr dicht zu uns nahe dem galaktischen Zentrum
Pal 7	Ser	18h10m44s	-07°12'27"	S.56	8' x 8'	10m3	19m0	63 Lj.	20.000 Lj.	auch IC 1276
Pal 8	Sgr	18h41m30s	-19°49'33"	S.66	4,7' x 4,7'	11m0	15m4	55 Lj.	30.000 Lj.	zweithellster KS des Kataloges - Lage in sehr sternreicher Umgebung
Pal 9	Sgr	18h55m06s	-22°42'05"	S.66	5,4' x 5,4'	9m3	16m0	26 Lj.	20.000 Lj.	auch NGC 6717 - nur 2' südlich eines 5 mag hellen Sterns
Pal 10	Sge	19h18m02s	+18°34'18"	S.42	7,2' x 7,2'	13m2	20m0	19 Lj.	20.000 Lj.	stark gerötet auf DSS-Ausschnitt
Pal 11	Aql	19h45m14s	-08°00'26"	S.54	3,2' x 3,2'	9m8	--	38 Lj.	30.000 Lj.	
Pal 12	Cap	21h46m39s	-21°15'09"	S.65	2,1' x 2,1'	12m0	14m6	51 Lj.	55.000 Lj.	
Pal 13	Peg	23h06m44s	+12°46'19"	S.40	0,7' x 0,7'	13m5	17m0	45 Lj.	86.000 Lj.	Lage im Outer Halo auf stark exzentrischer Bahn
Pal 14	Her	16h10m59s	+14°57'42"	S.43	2,1' x 2,1'	14m7	19m0	144 Lj.	220.000 Lj.	wg. geringer Sterndichte einer der schwierigsten KS des Katalogs
Pal 15	Oph	16h59m51s	-00°32'18"	S.55	4,2' x 4,2'	14m0	16m0	174 Lj.	130.000 Lj.	optisch schwer zu fassen aufgrund geringer Sterndichte

Palomar 1

RA 03h33m20s

DEC +79°34'52"

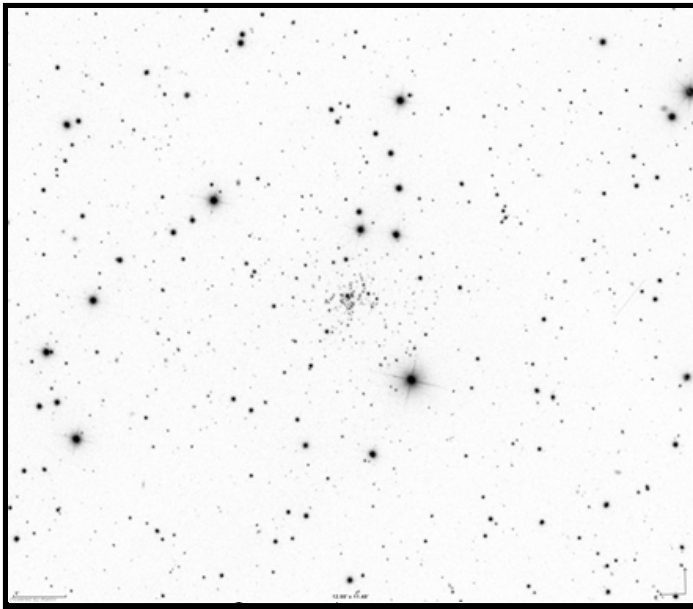


Bild: SDSS

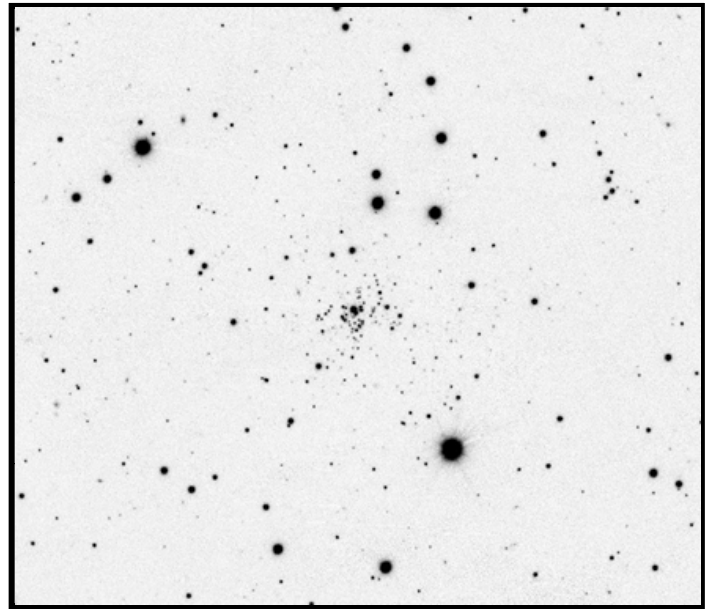
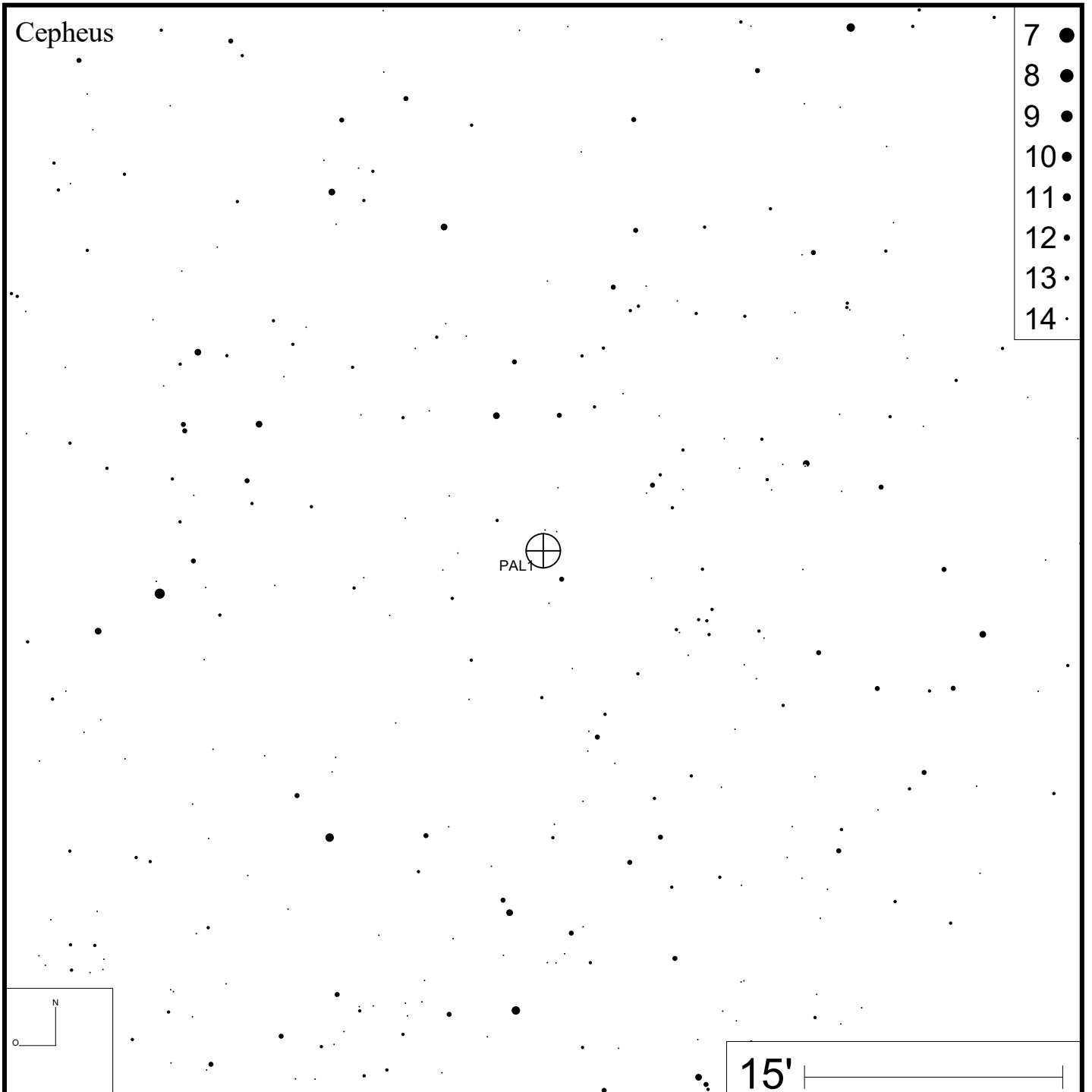


Bild: PanSTARRS

Cepheus



- 7 ●
- 8 ●
- 9 ●
- 10 ●
- 11 ●
- 12 ●
- 13 ●
- 14 ●

Palomar 2

RA 04h46m06s

DEC +31°22'53"

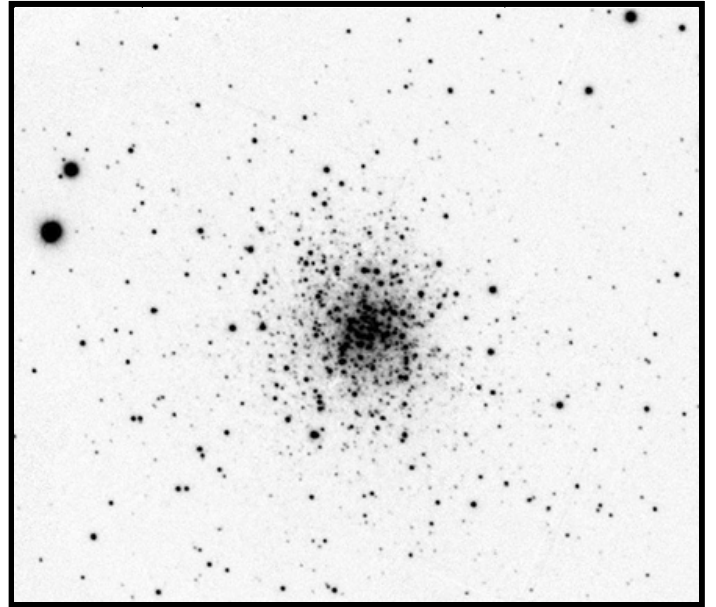
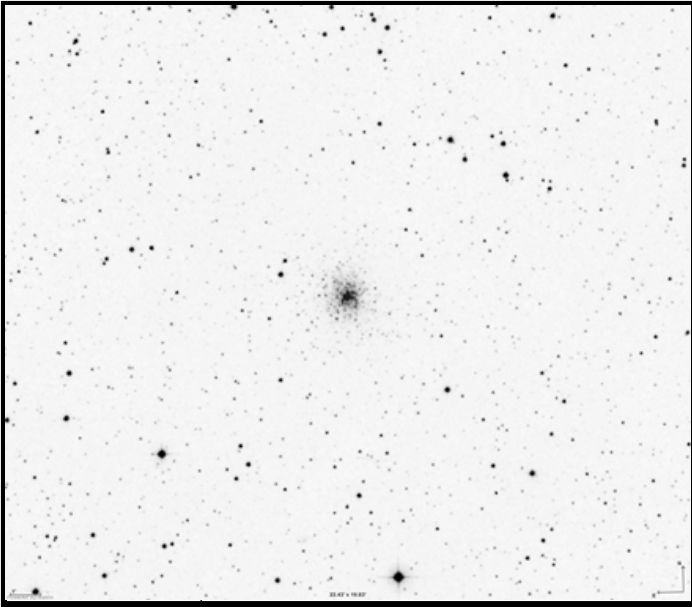
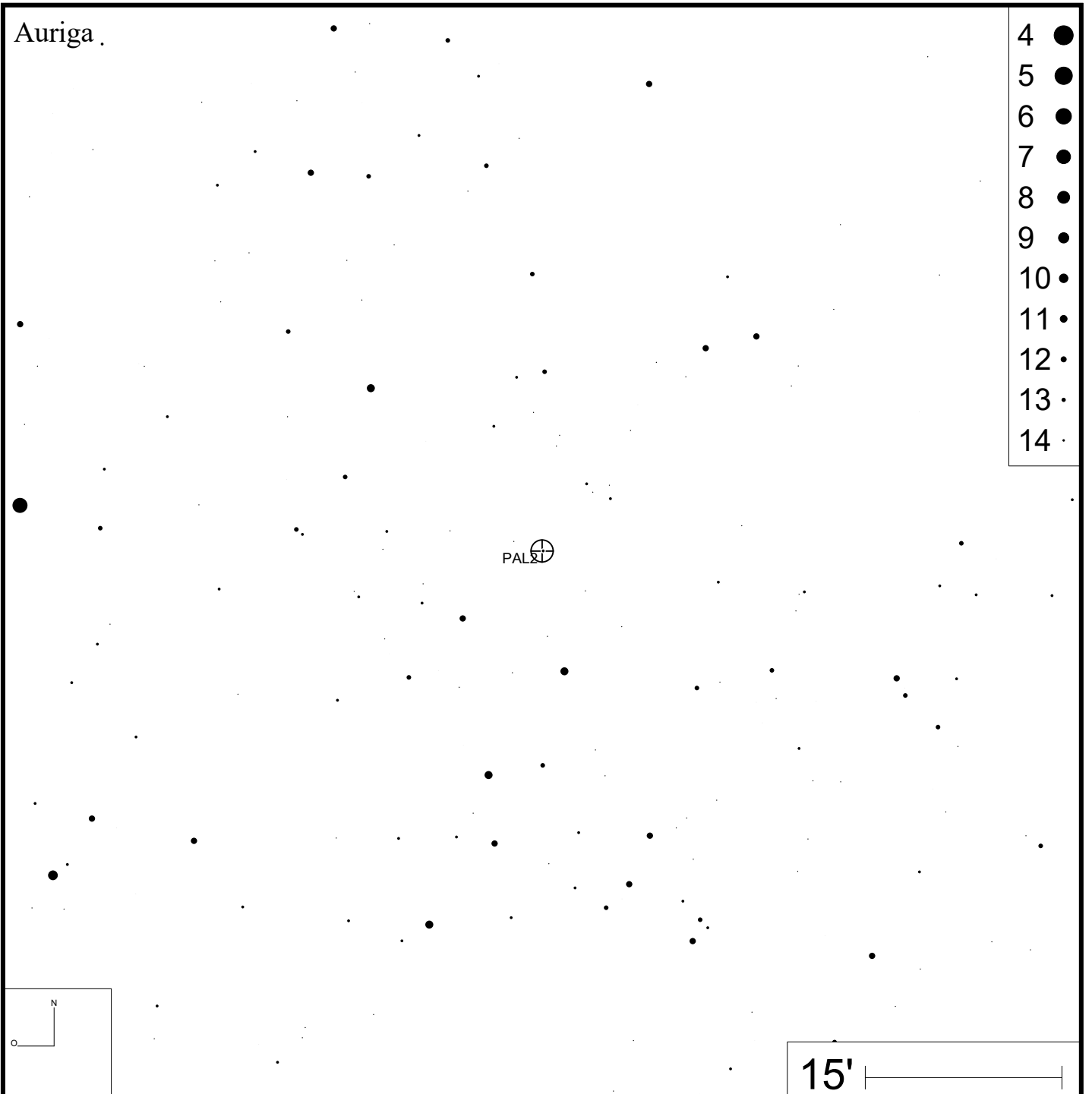


Bild: DSS

Bild: PanSTARRS

Auriga



- 4 ●
- 5 ●
- 6 ●
- 7 ●
- 8 ●
- 9 ●
- 10 ●
- 11 ●
- 12 ●
- 13 ●
- 14 ●

PAL 2

15'

Palomar 3

RA 10h05m31s

DEC +00°04'15"

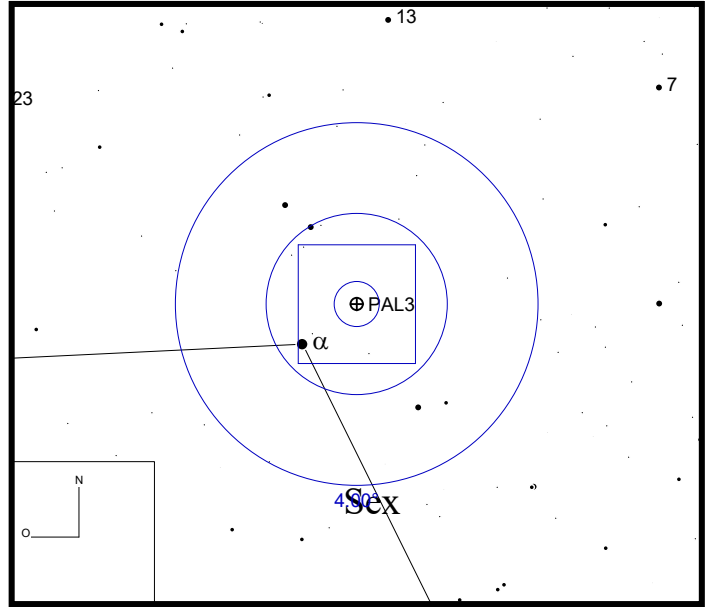
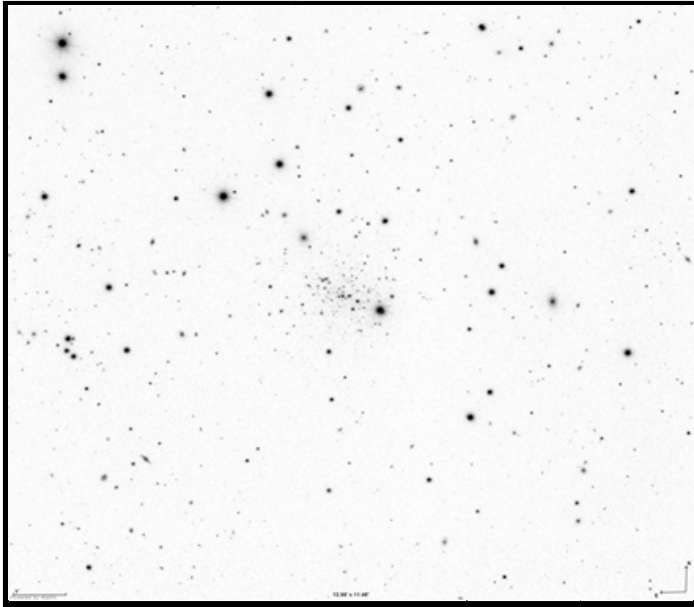
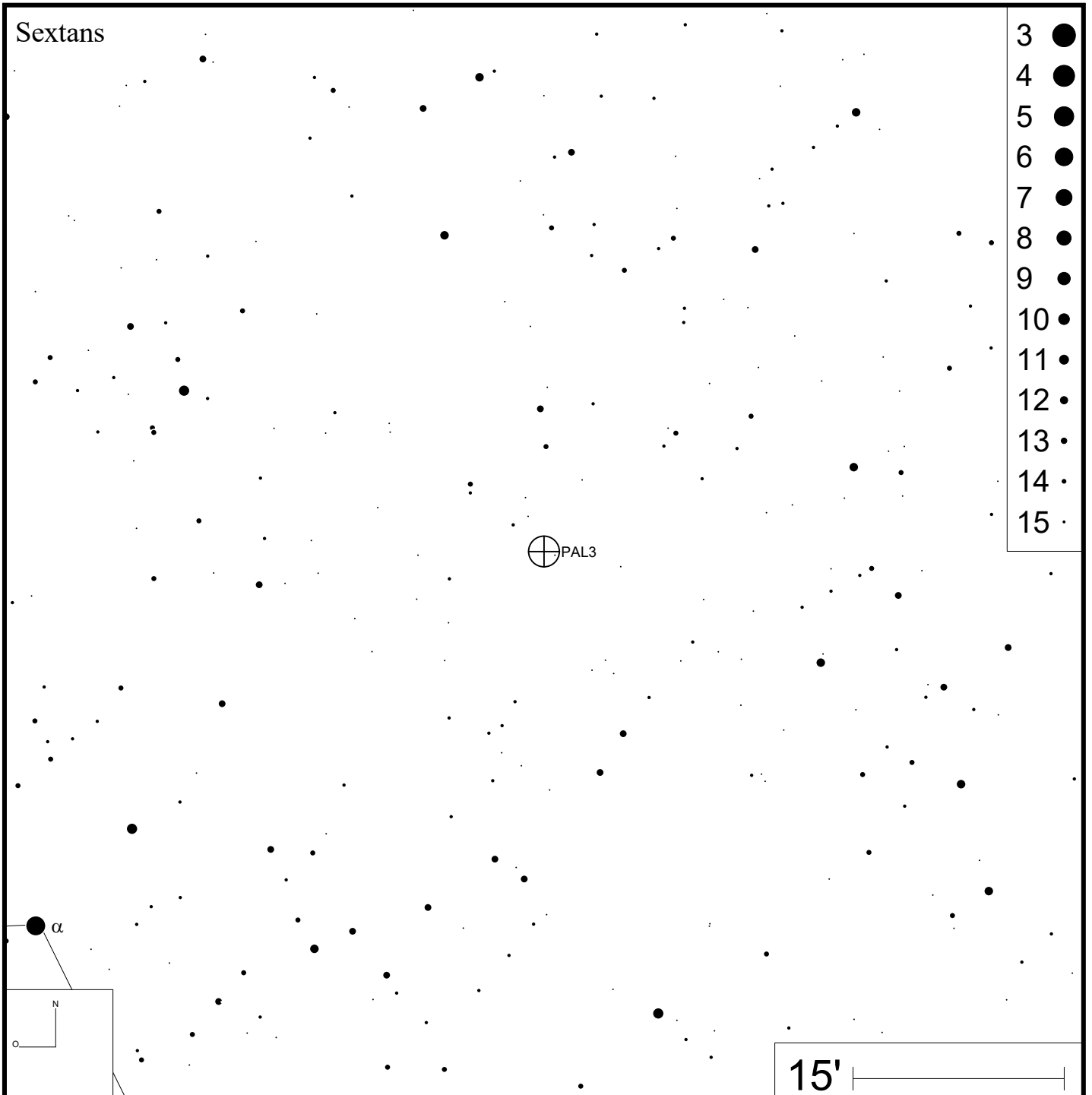


Bild: SDSS

Sextans



- 3 ●
- 4 ●
- 5 ●
- 6 ●
- 7 ●
- 8 ●
- 9 ●
- 10 ●
- 11 ●
- 12 ●
- 13 ●
- 14 ●
- 15 ●

Palomar 4

RA 11h29m17s DEC +28°58'25"

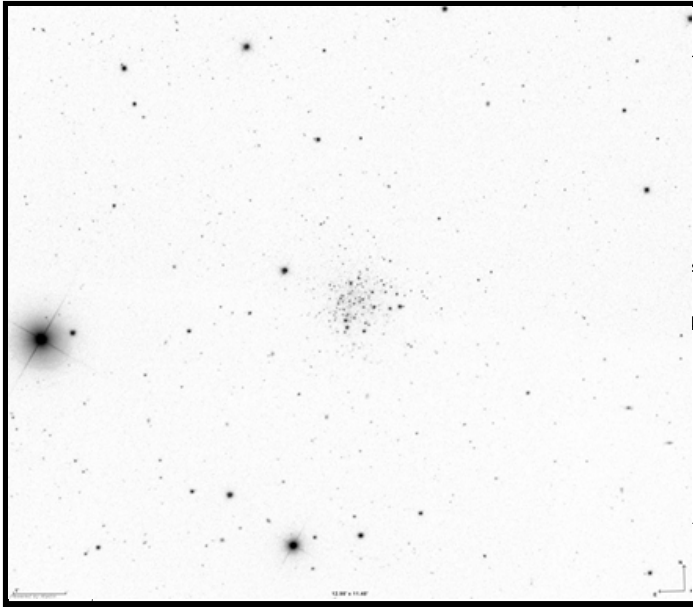
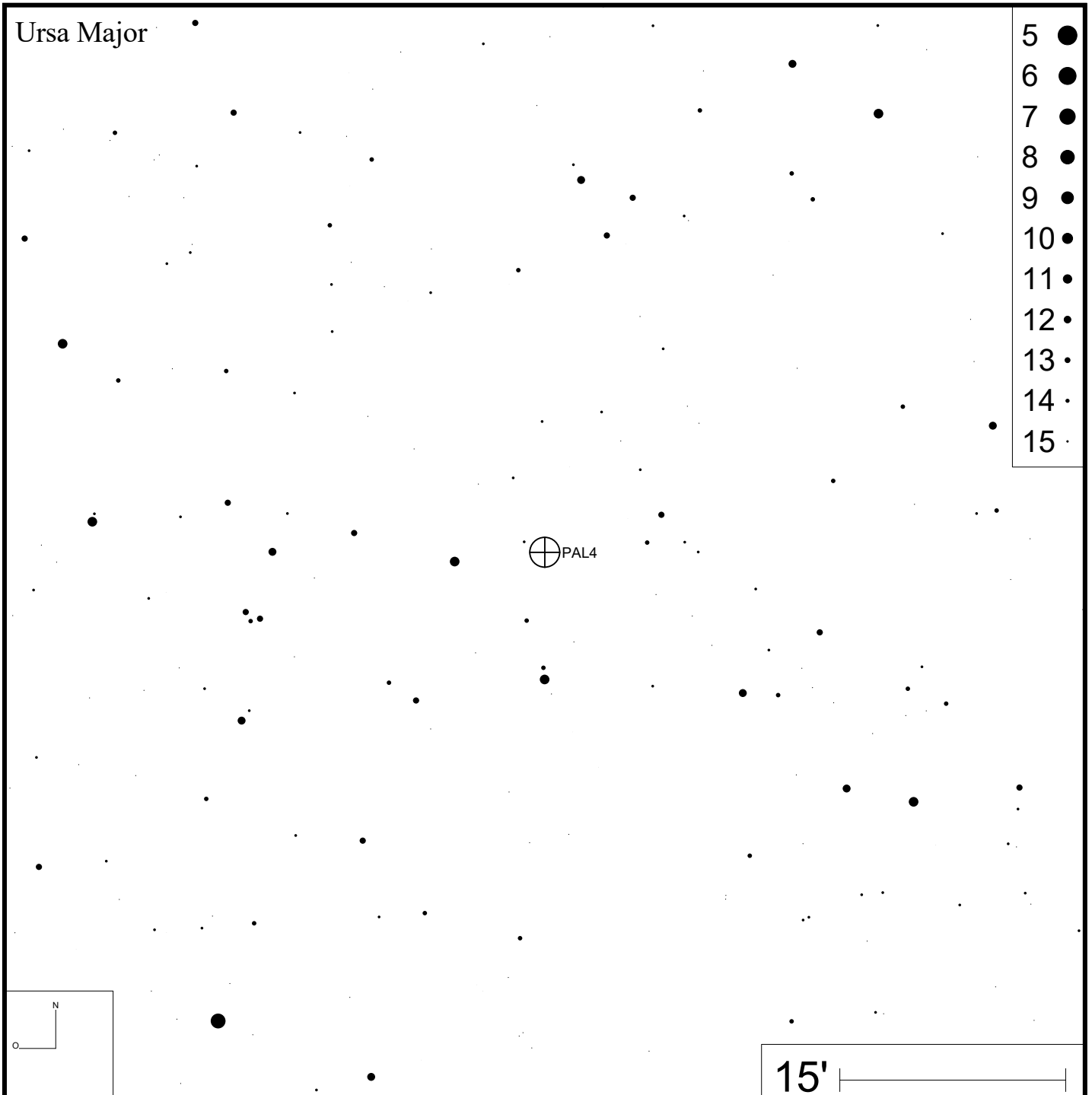
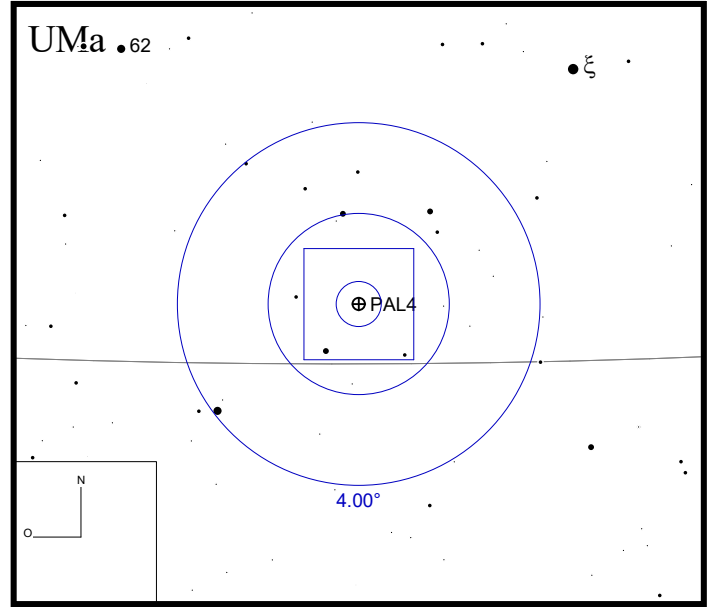


Bild: SDSS



- 5 ●
- 6 ●
- 7 ●
- 8 ●
- 9 ●
- 10 ●
- 11 ●
- 12 ●
- 13 ●
- 14 ●
- 15 ●

Palomar 5

RA 15h16m05s

DEC -00°06'41"

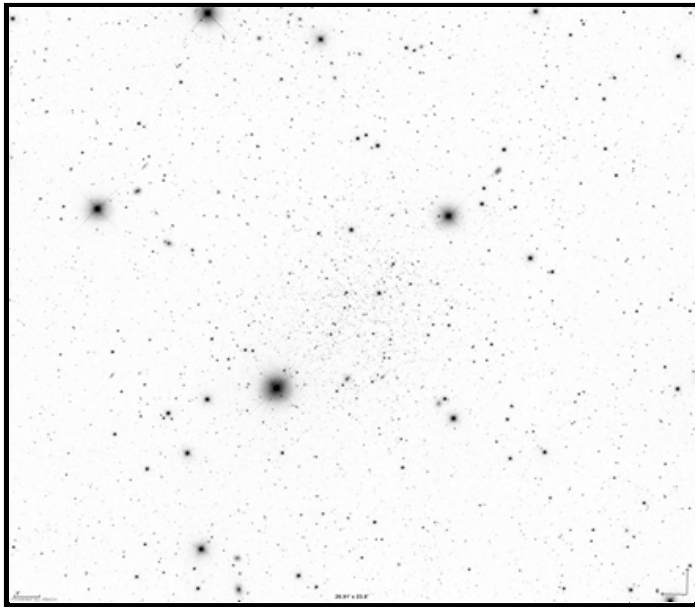


Bild: SDSS

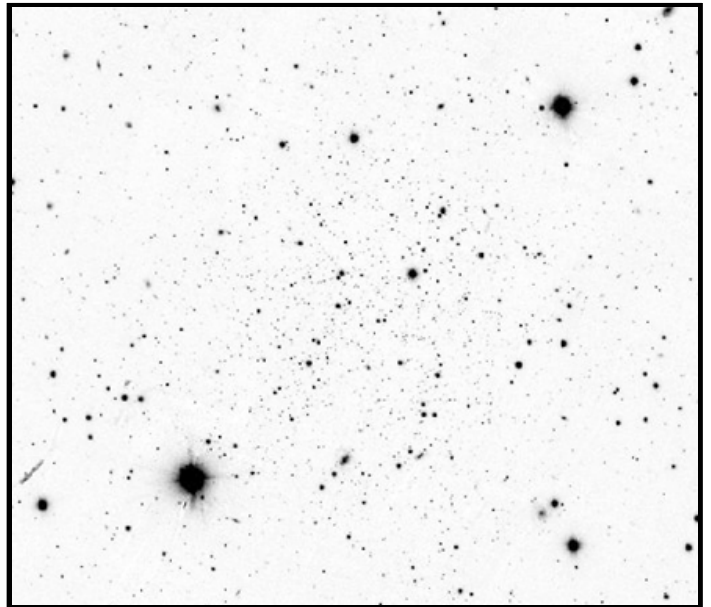
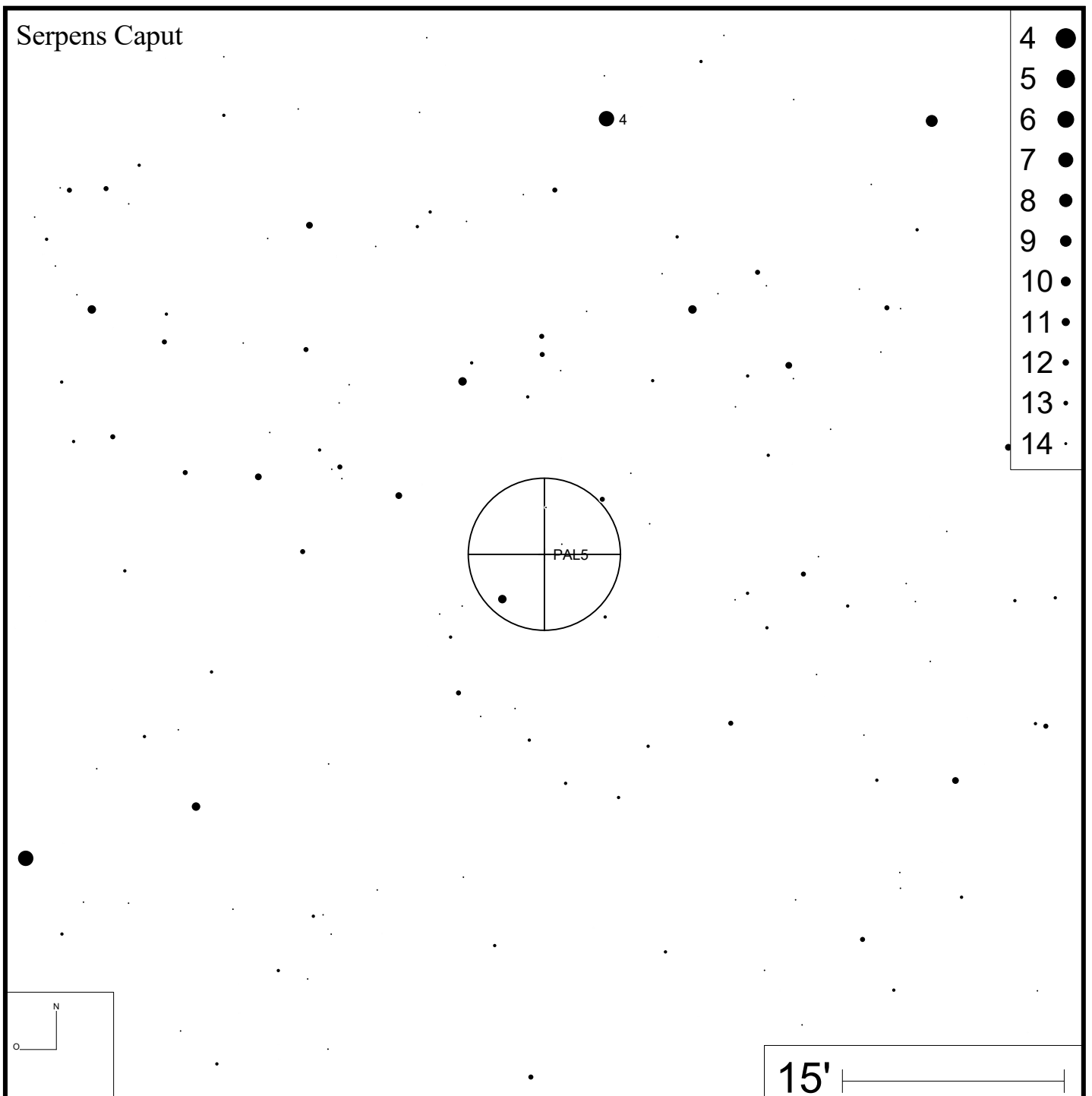


Bild: PanSTARRS

Serpens Caput



- 4 ●
- 5 ●
- 6 ●
- 7 ●
- 8 ●
- 9 ●
- 10 ●
- 11 ●
- 12 ●
- 13 ●
- 14 ●

15'

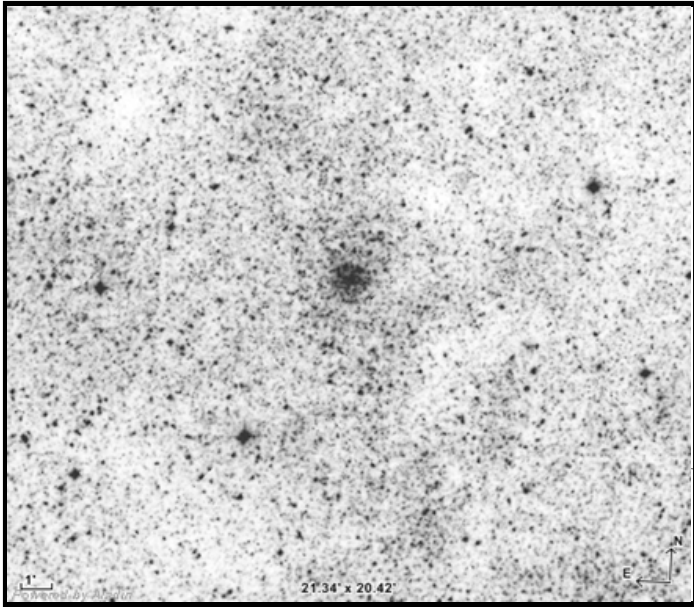


Bild: SDSS

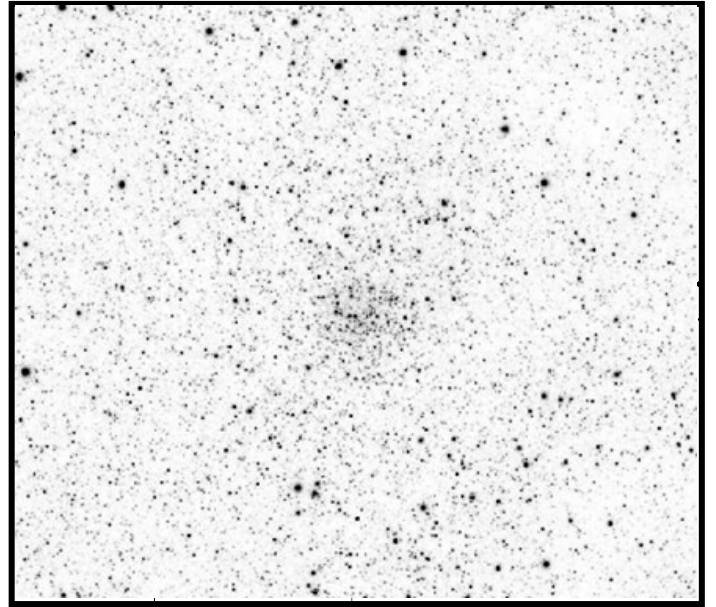
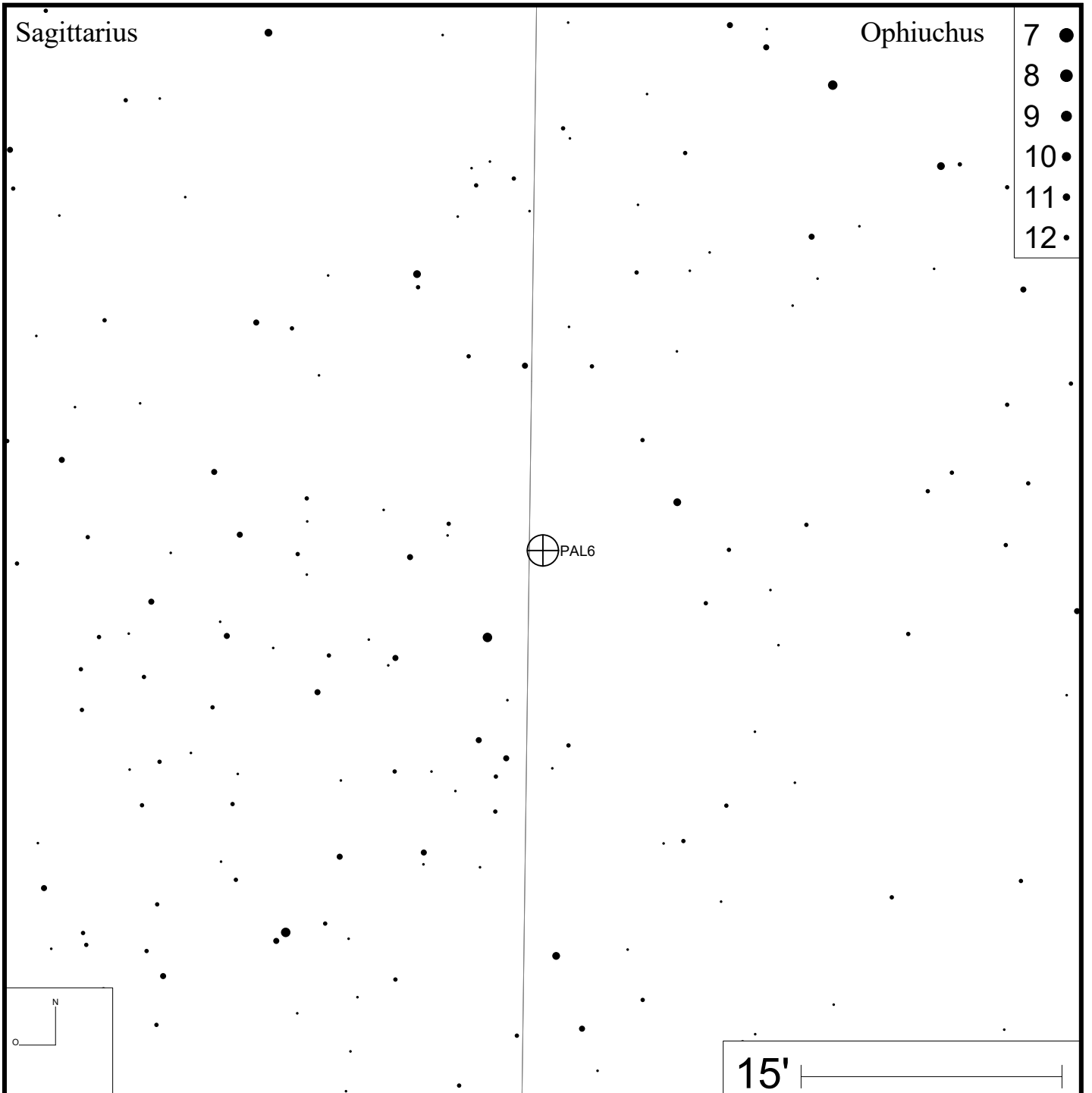


Bild: PanSTARRS



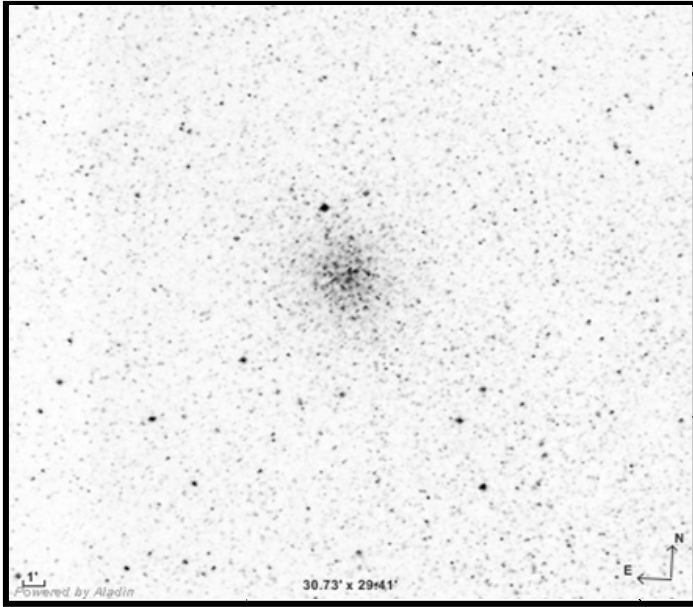
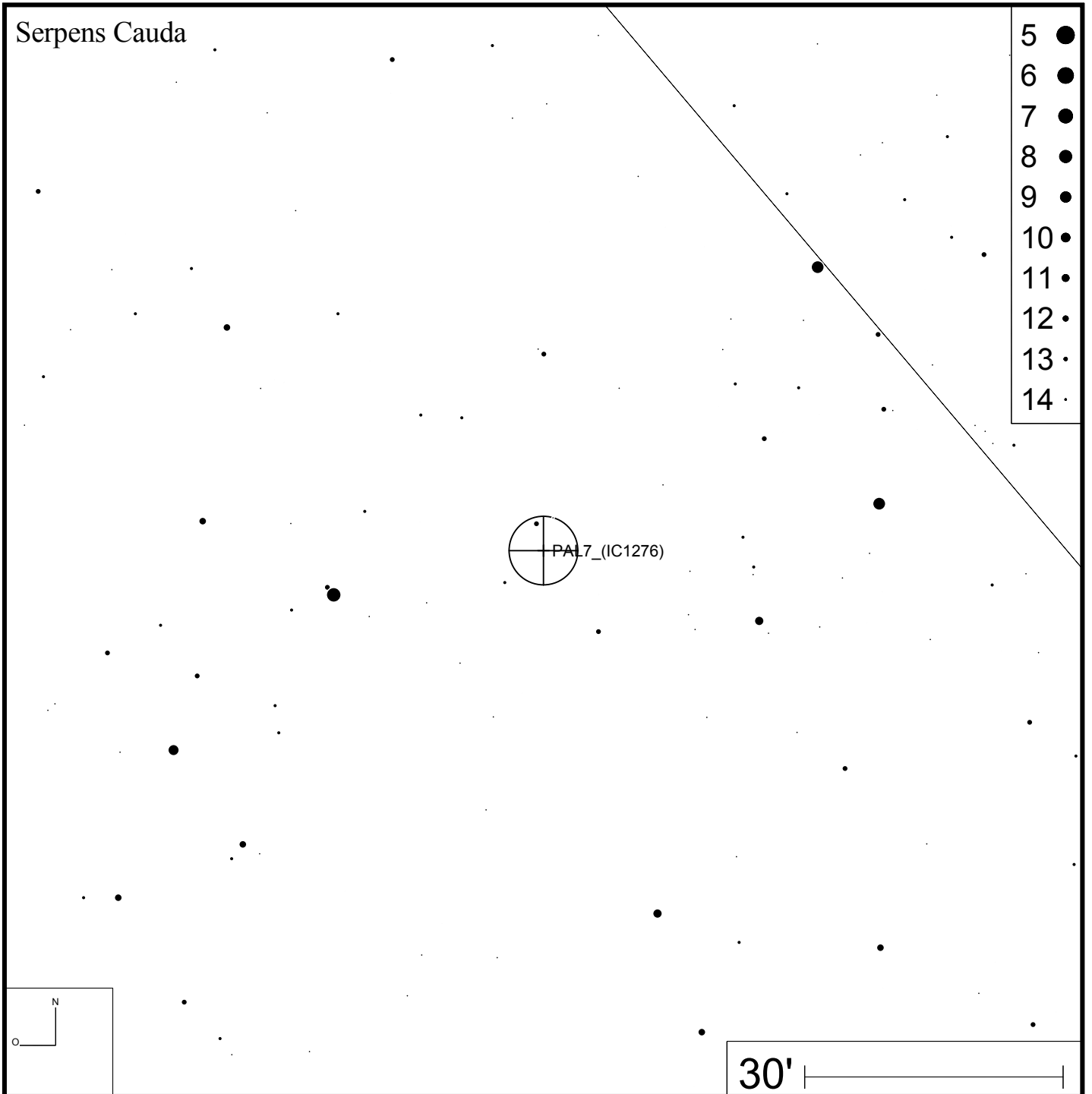
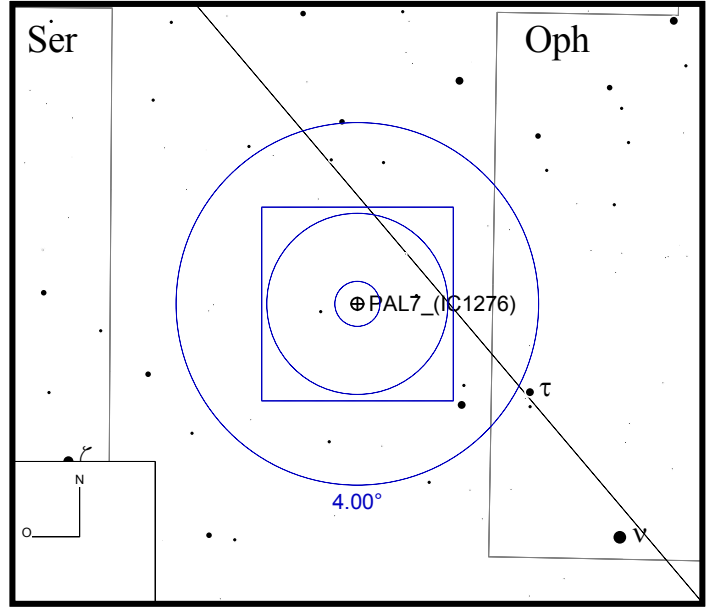
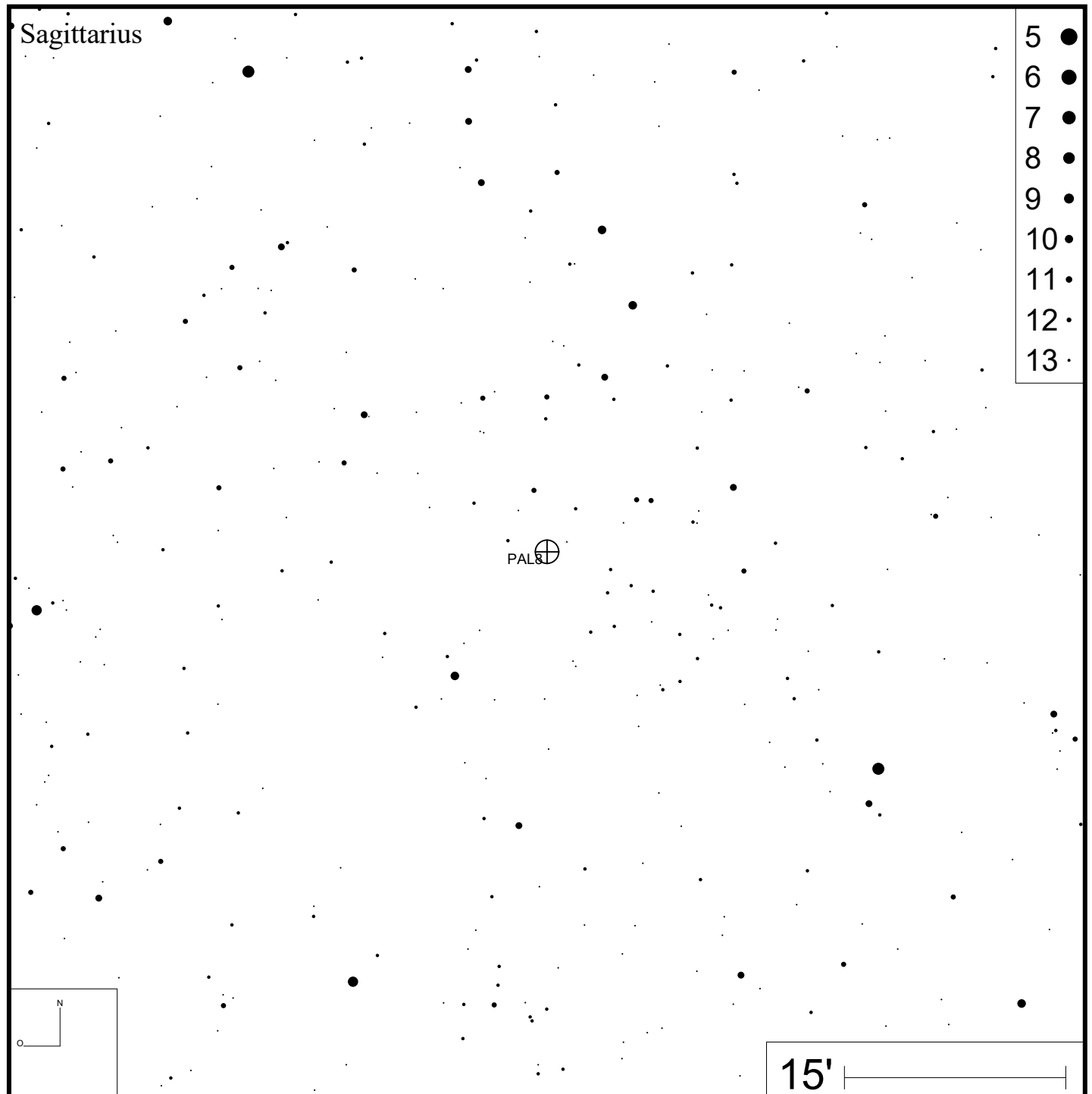
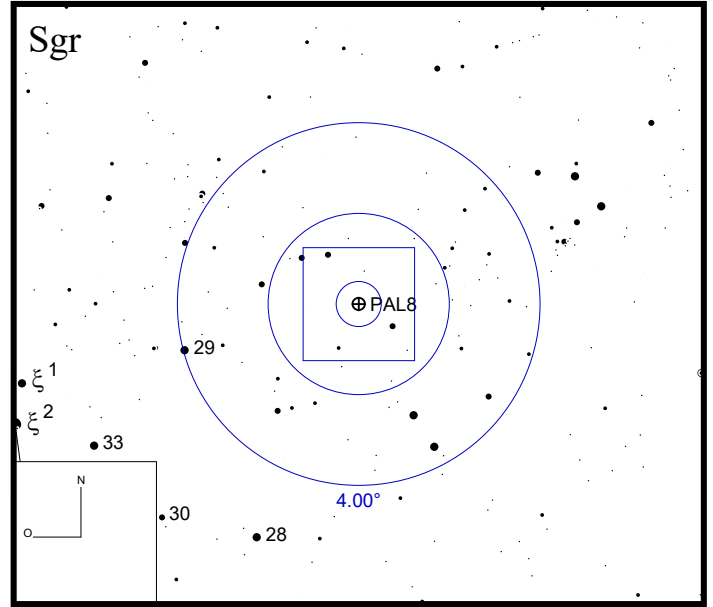
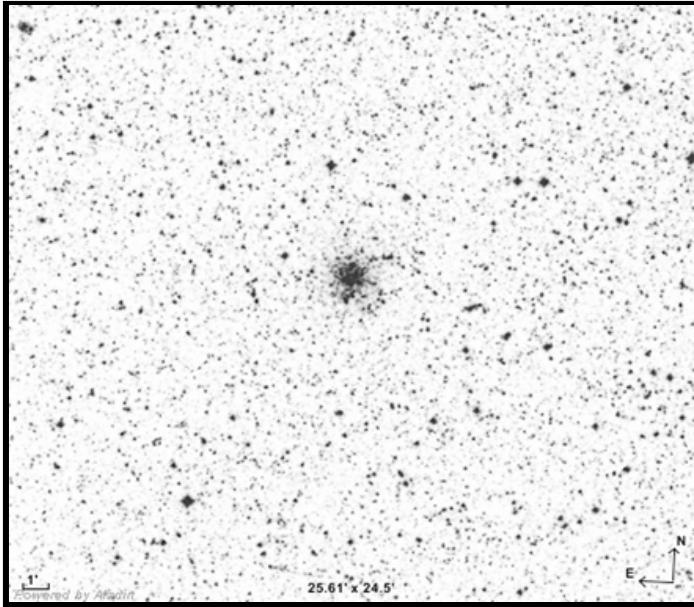


Bild: DSS



- 5 ●
- 6 ●
- 7 ●
- 8 ●
- 9 ●
- 10 ●
- 11 ●
- 12 ●
- 13 ●
- 14 ●



Palomar 9 (NGC 6717)

RA 18h55m06s

DEC -22°42'05"

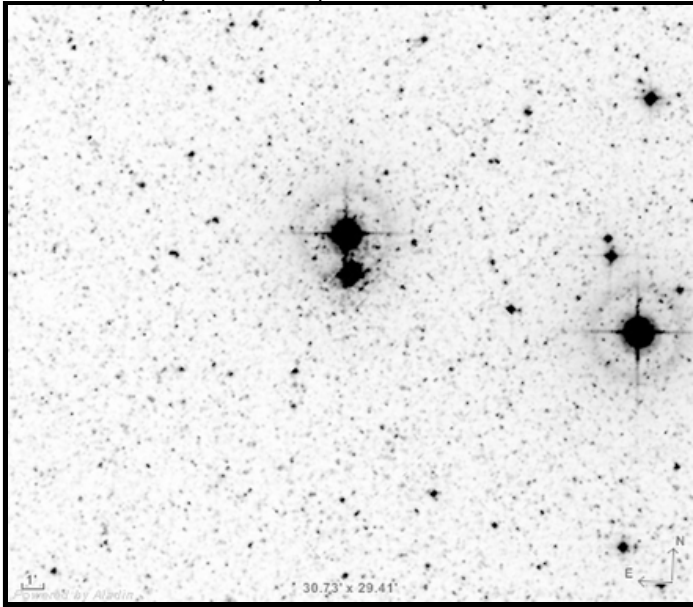


Bild: DSS

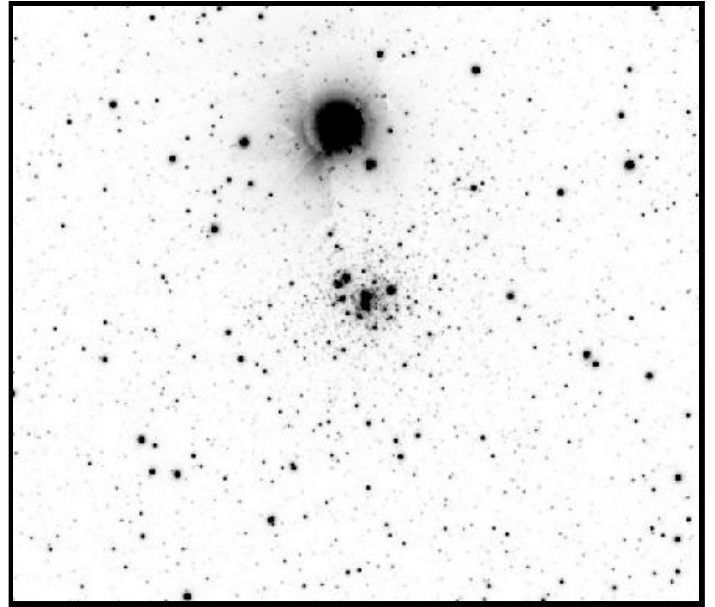
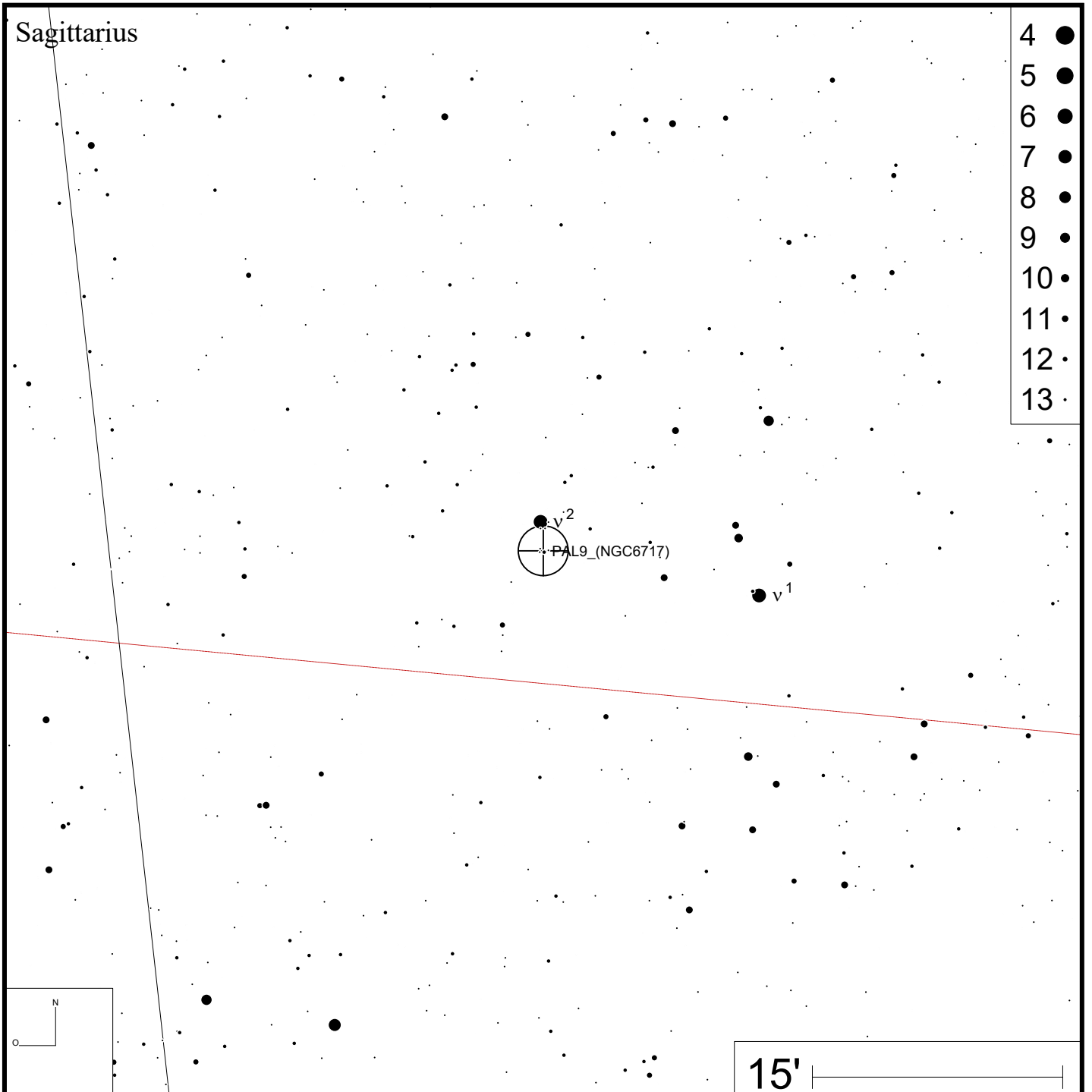


Bild: PanSTARRS



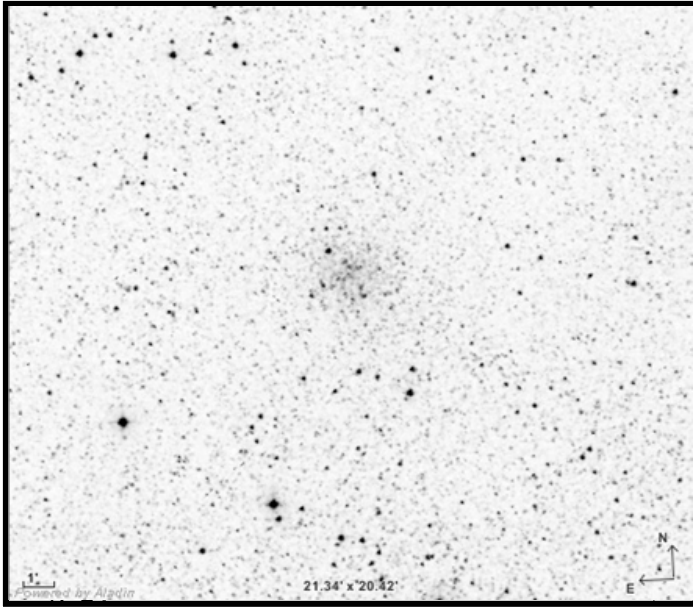
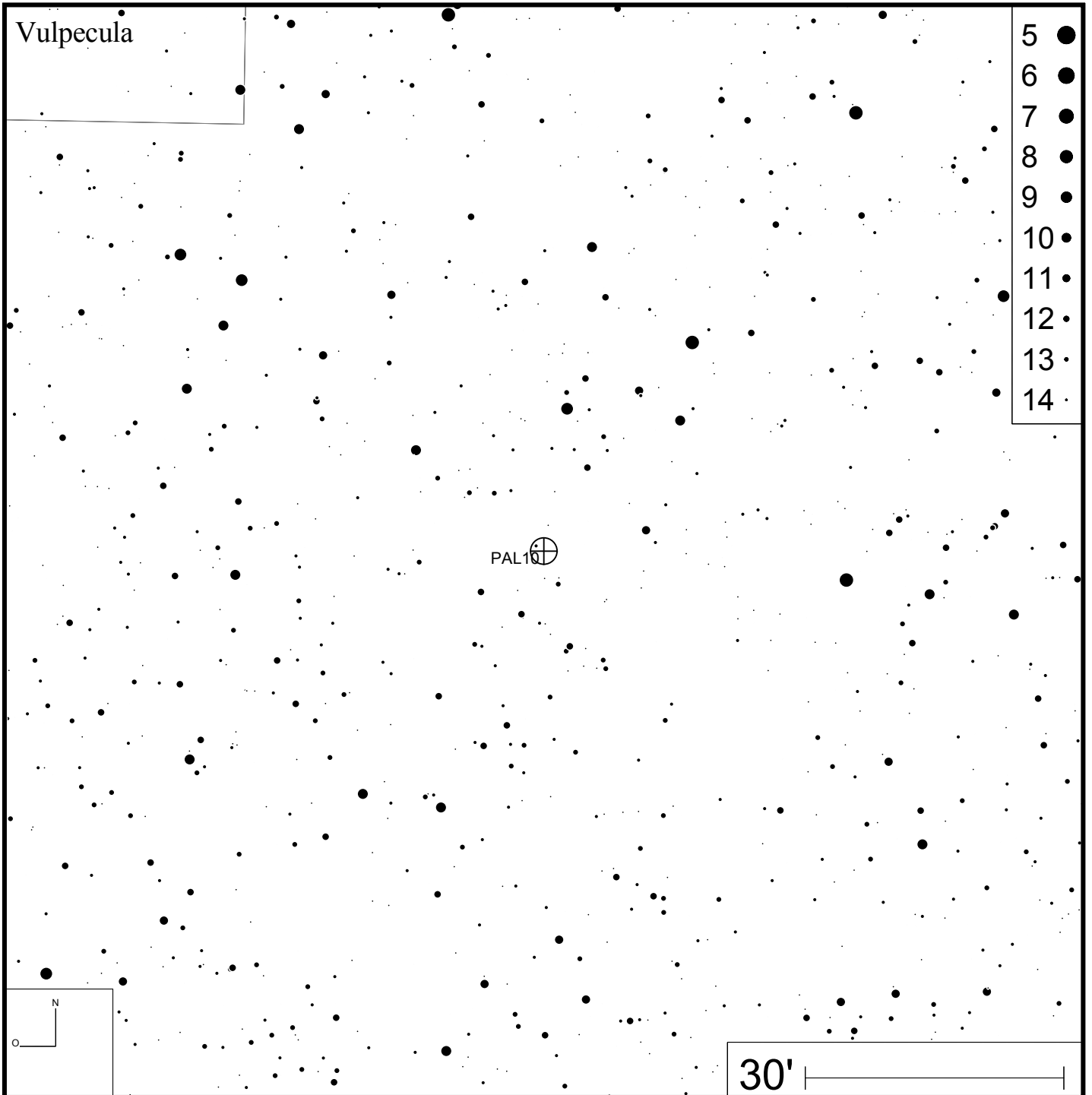
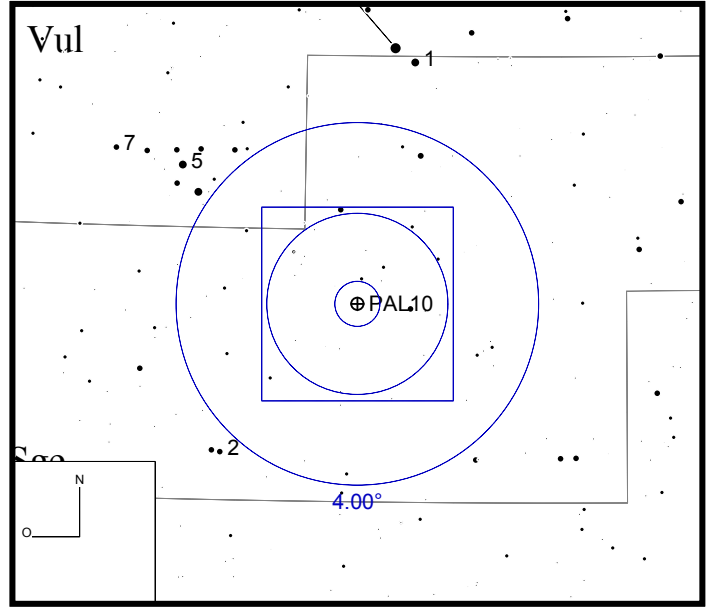


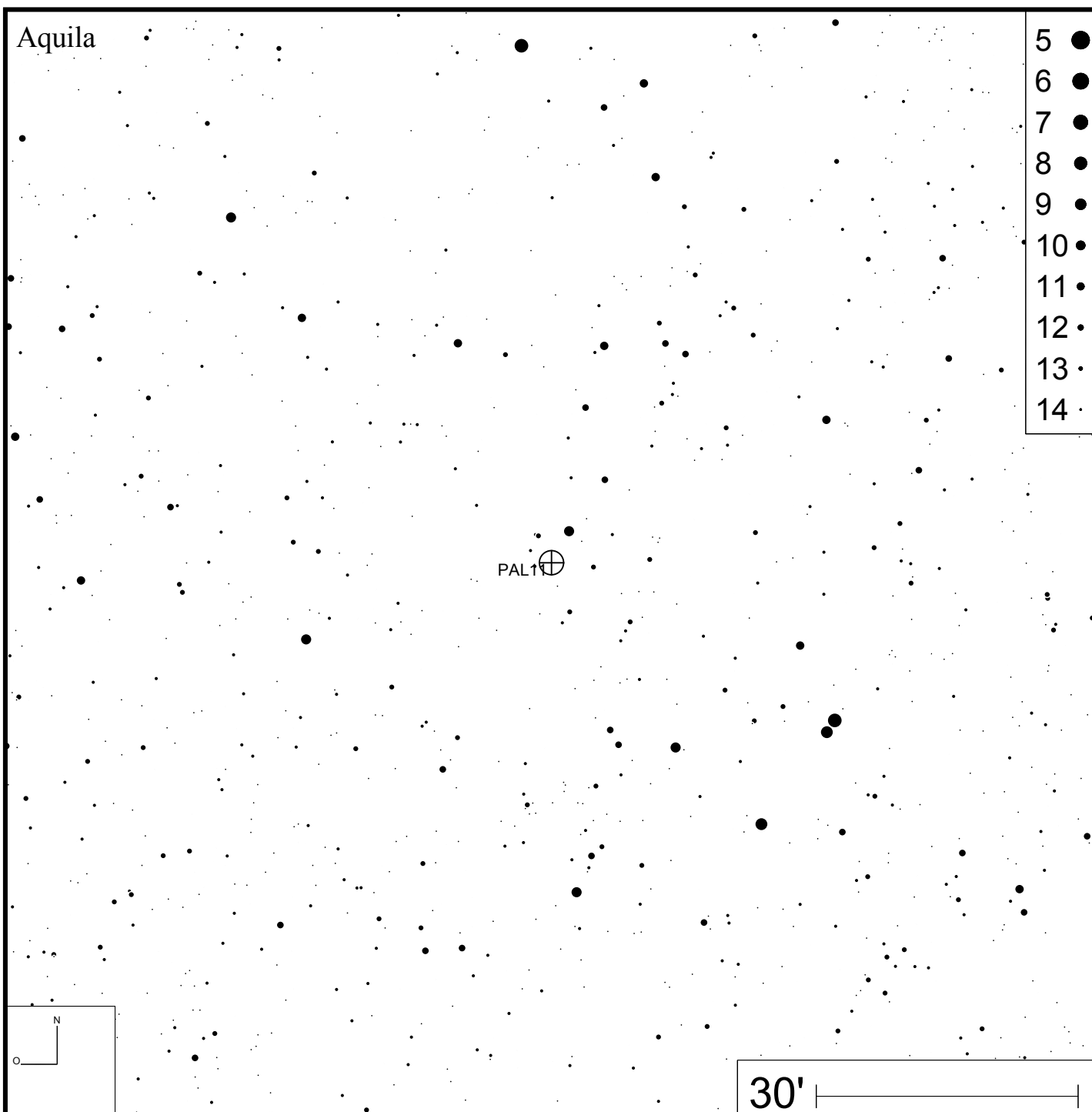
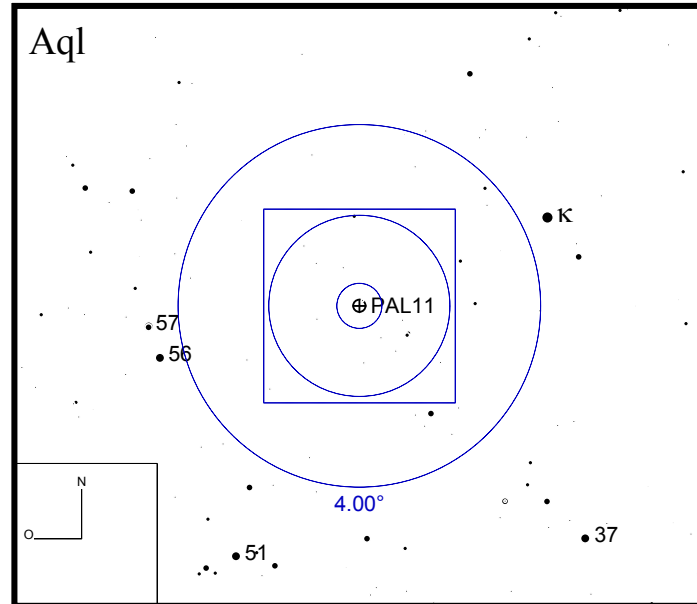
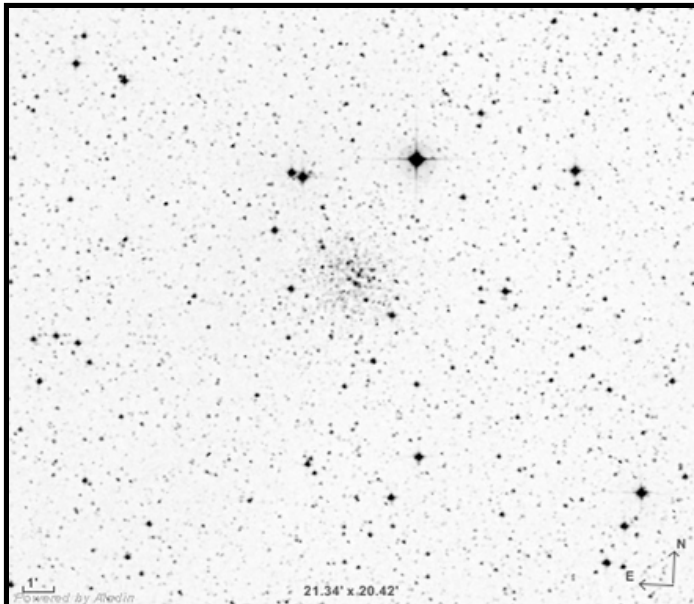
Bild: DSS



Palomar 11

RA 19h45m14s

DEC -08°00'26"



Palomar 12

RA 21h46m39s

DEC -21°15'09"

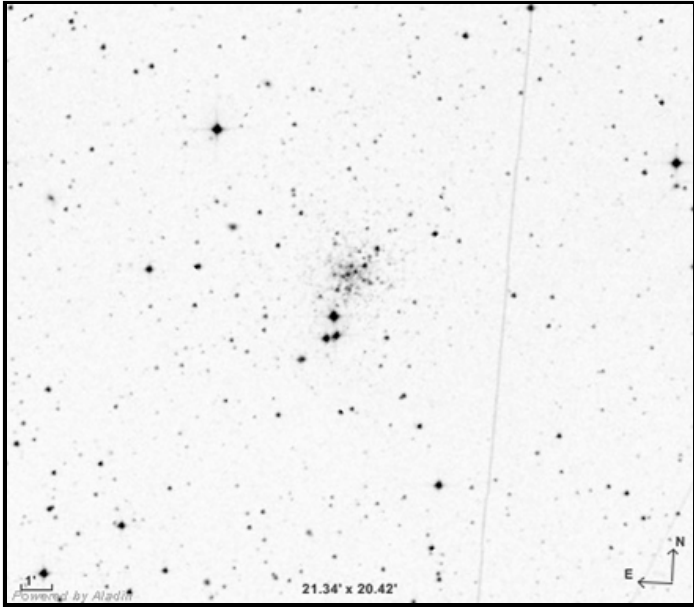
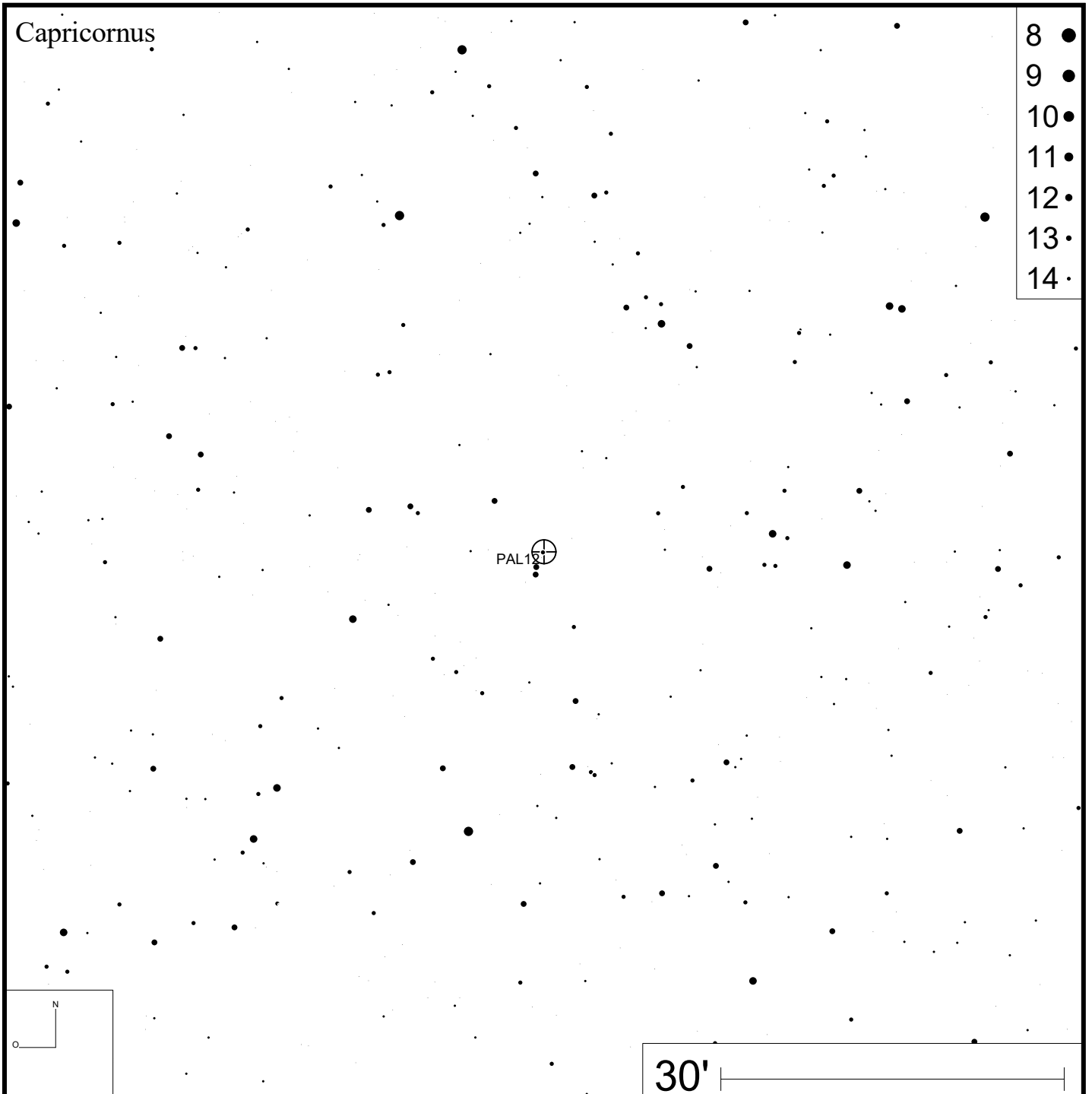
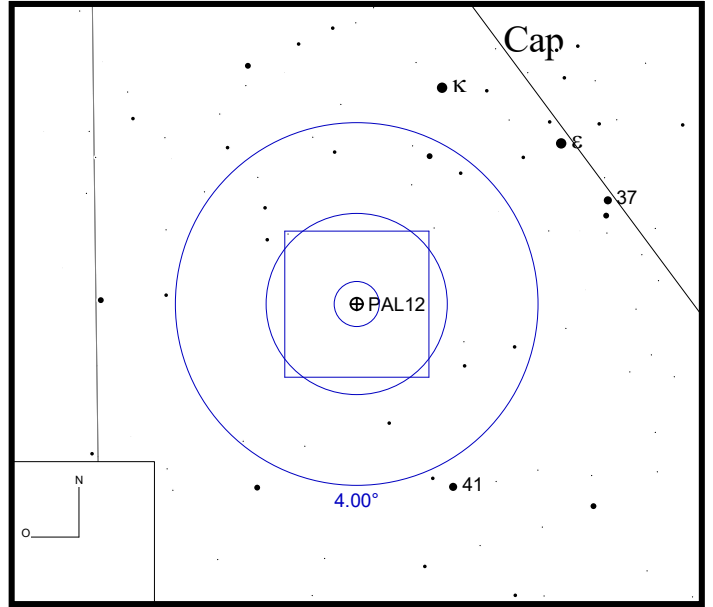


Bild: DSS



Palomar 13

RA 23h06m44s

DEC +12°46'19"

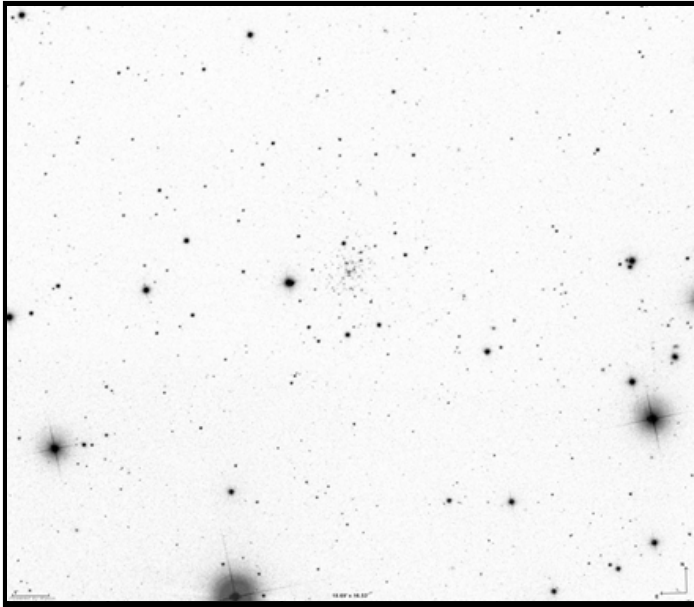


Bild: SDSS

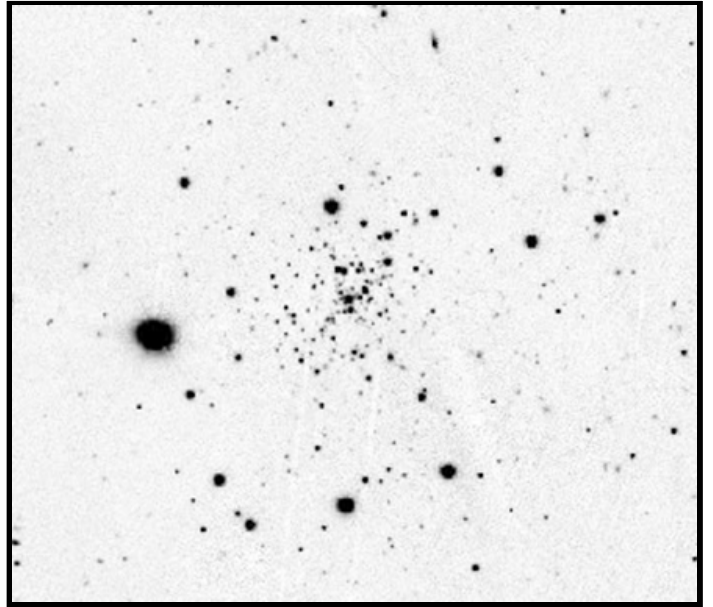
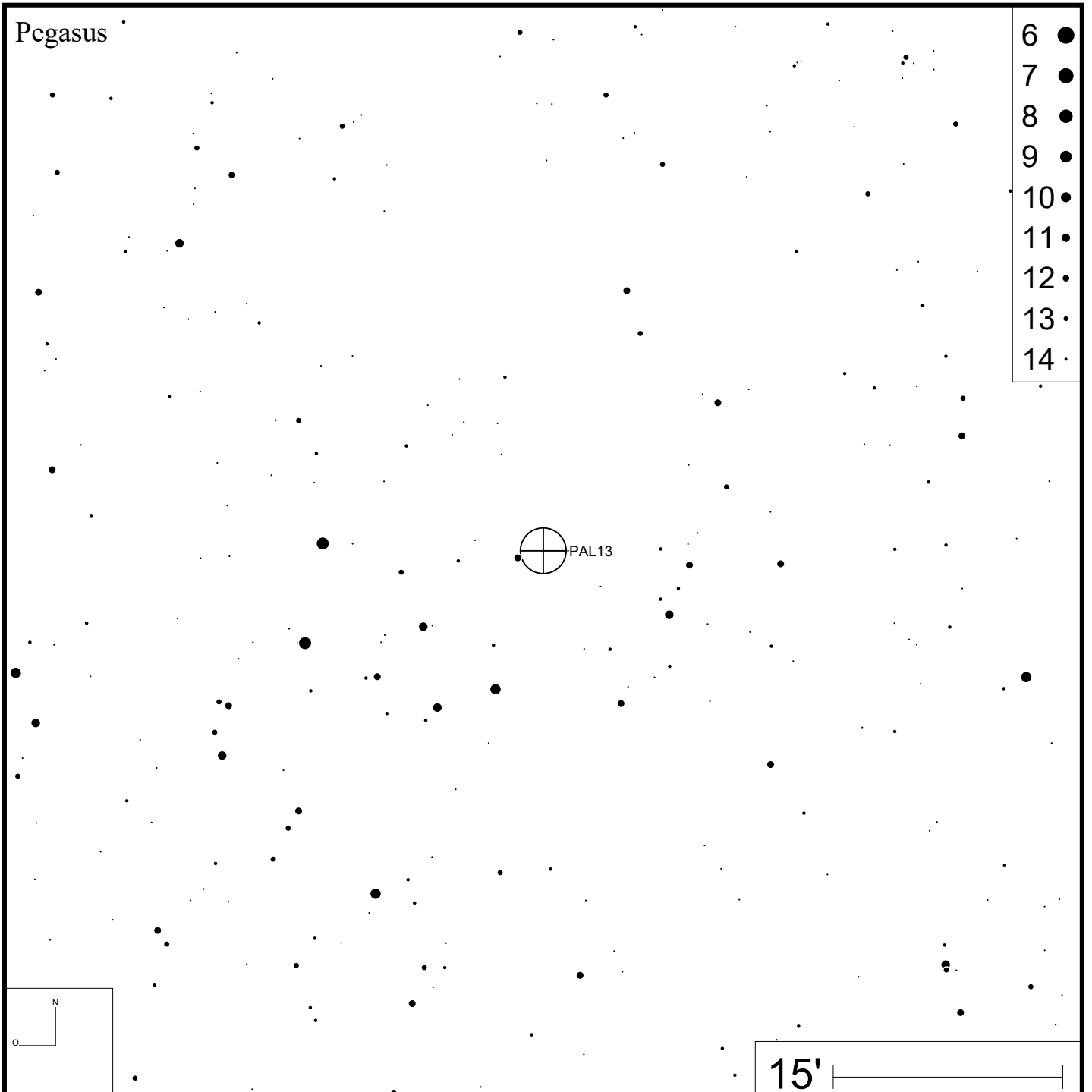


Bild: PanSTARRS



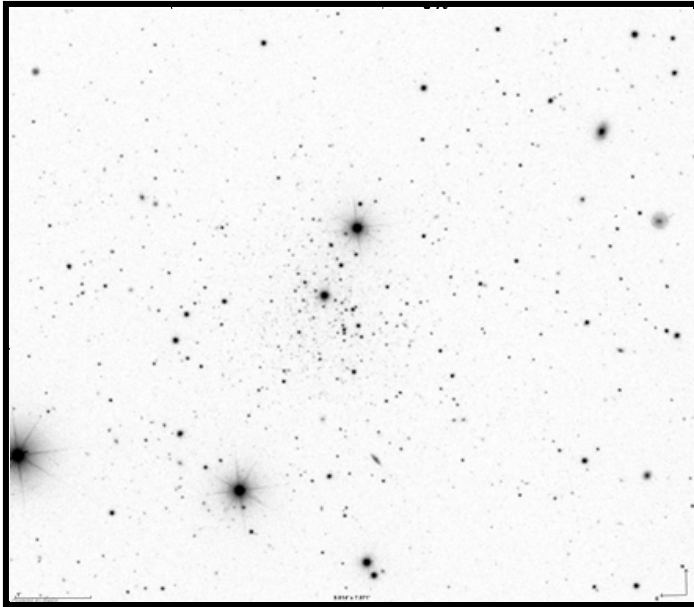


Bild: SDSS

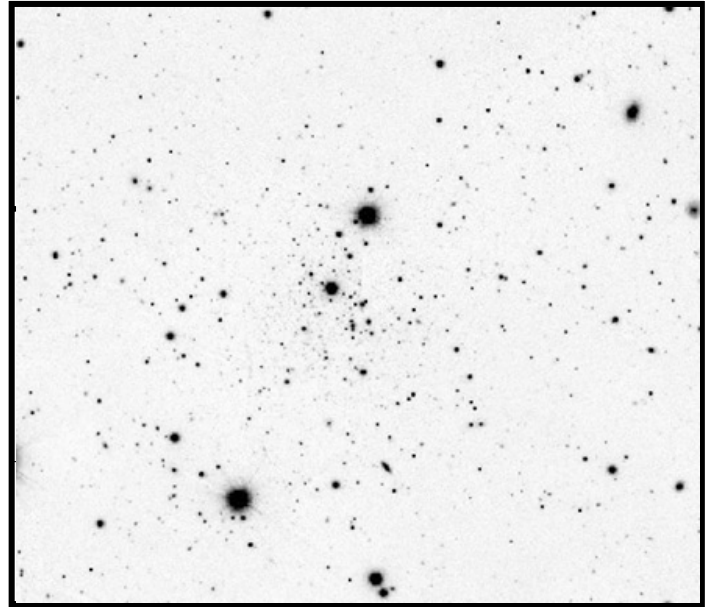
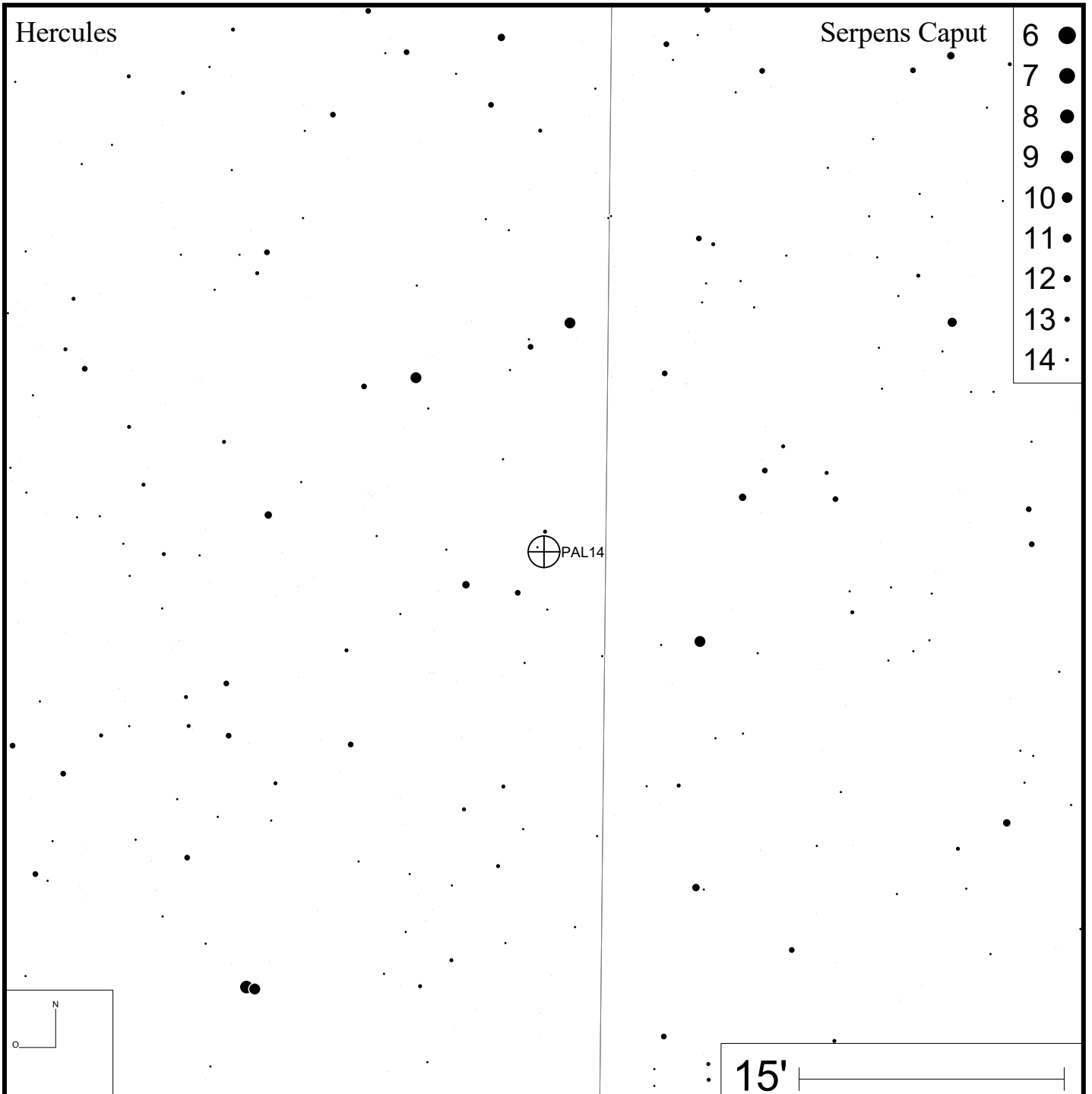


Bild: PanSTARRS



Hercules

Serpens Caput

- 6 ●
- 7 ●
- 8 ●
- 9 ●
- 10 ●
- 11 ●
- 12 ●
- 13 ●
- 14 ●

PAL14

15'

Palomar 15

RA 16h59m51s

DEC -00°32'18"

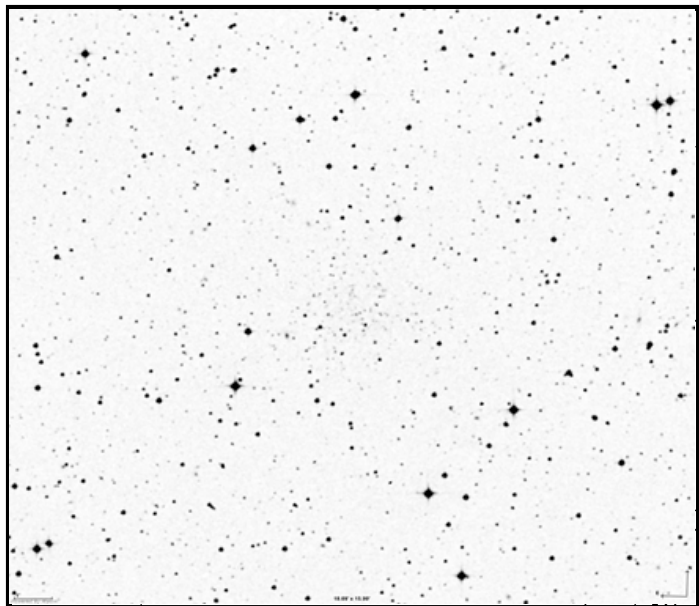


Bild: DSS

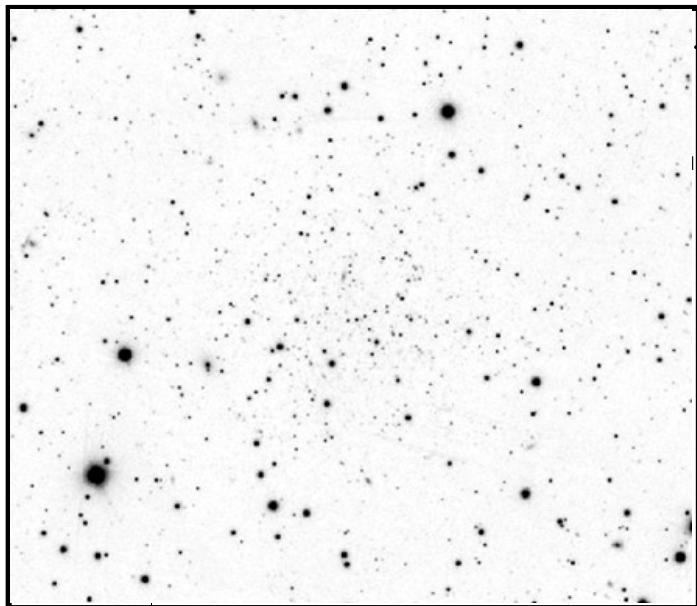
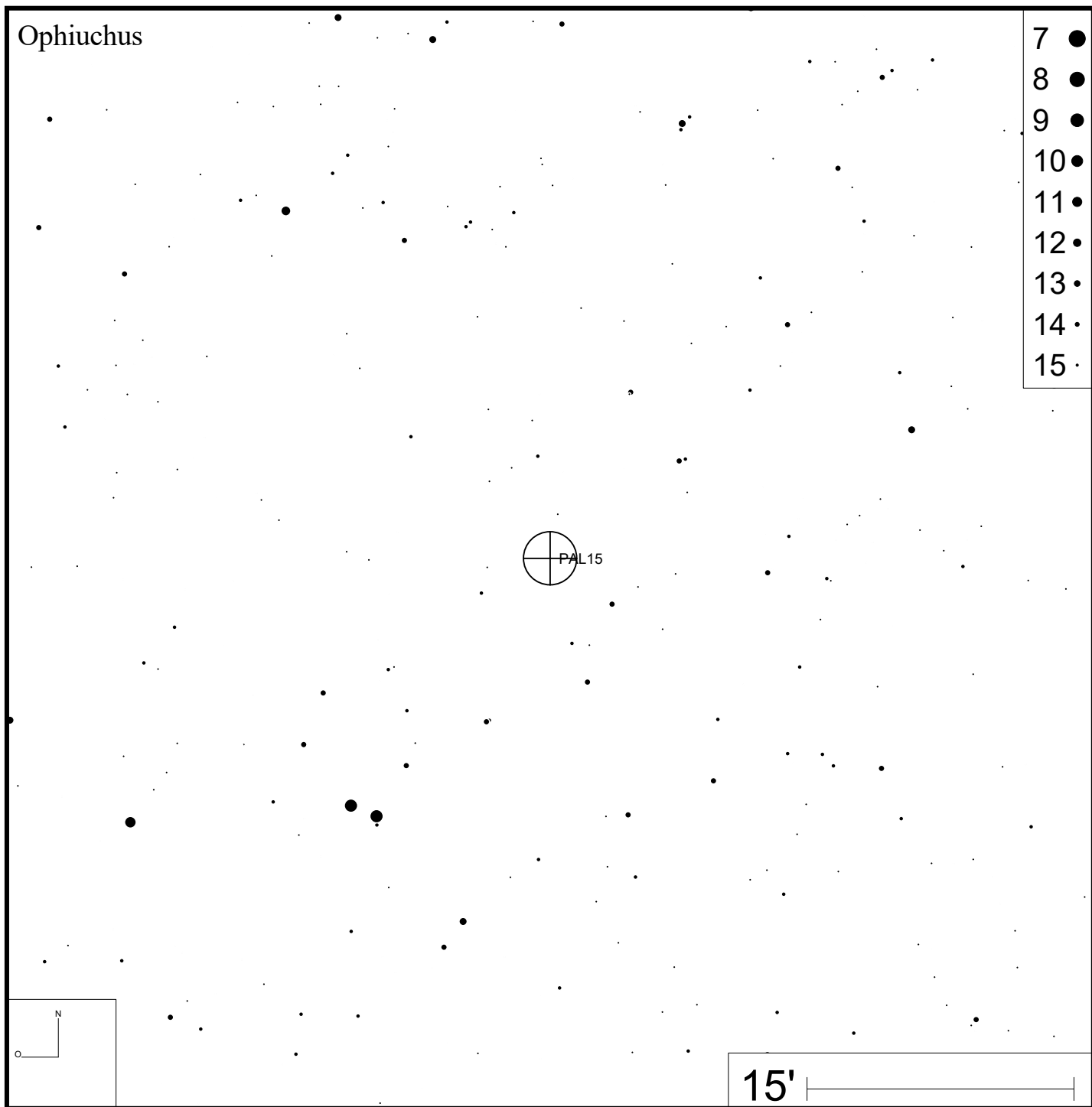


Bild: PanSTARRS

Ophiuchus



- 7 ●
- 8 ●
- 9 ●
- 10 ●
- 11 ●
- 12 ●
- 13 ●
- 14 ●
- 15 ●

PAL15

15'